

**REMOTE COOLING UNITS
NOT FOR USE WITH R.O. WATER
OASIS® R8, R12
SUNROC RWCD8, RWCD12
INSTRUCTIONS**

1. INSPECTION

Inspect the carton and water cooler for evidence of rough handling and concealed damage. Damage claims should be filed with the carrier.

2. MAINTENANCE

The only maintenance operation required is the removal of dirt and lint from the condenser. Inspection should be made at 3 month intervals. When condenser requires cleaning, remove dirt and lint with a vacuum cleaner. Observance of this procedure will insure adequate air circulation through the condenser so operation is efficient and economical.

3. OVERLOAD PROTECTION

The compressor motor is equipped with an automatic reset protector which will disconnect the motor from the line in case of an overload.

4. LUBRICATION

This unit is equipped with a hermetically sealed compressor and requires no additional lubrication. The fan motor on this unit seldom needs oiling, but if required, a few drops of SAE 10 oil should be used.

5. COOLING UNIT INSTALLATION

- a) **Note:** The following states require a licensed plumber to install cooler; AR, GA, MA, MI, OK, RI, SC, SD, TX, VT and WI.
CA, KS, MN, NM and OR allow for a state-registered installer or contractor as well. State and local plumbing codes may prohibit the use of saddle tapping valves for water line connection in some applications. All connections must conform to applicable plumbing codes.
- b) This unit is a remote water cooling package suitable for mounting in most locations.
CAUTION: If located in a recess or alcove, the ventilated sides of the cooling unit requires a minimum of 5" clearance from walls. This unit is not intended for cabinet or under-sink installation.
- c) Locate and install plumbing and electrical service in accordance with the dimensional drawing.
- d) Connect water supply tube from WATER-IN tube on cooling unit to the shut-off valve. If a filter is to be installed, place it in-line between the shut-off valve and the WATER-IN tube on the cooling unit.
- e) A filter kit is available for retrofit to this system. Refer to kit instructions for installation. **WARNING: Do not flush filter until WATER-OUT connection is made.** A bracket or clip can be used to secure the filter. Refer to the "Rough in and Dimensional Drawing" of the unit in which the filter is to be installed for specifics on use and location. Pre-punched holes are already located where the filter will be mounted.
- f) Make connection to WATER-OUT tube on cooling unit.
- g) Flush filter per instructions listed on the "Oasis Versafilter Cartridge Replacement Instructions" sheet.
- h) Check the available power supply against the cooling unit data plate to assure correct electrical service. Make service connections to the outlet box.
- i) Turn on power and water supply to the cooling unit. After cooling unit has filled as evidenced by the absence of the audible filling sound, draw off water until no air bubbles are seen in the water stream.

6. TO DISCONTINUE USE OF COOLING UNIT

- a) Disconnect power supply.
- b) Close water supply shut-off valve.
- c) Provide container to catch water and remove drain plug from cooling unit.
- d) Replace plug when draining is complete.
- e) **ALWAYS DRAIN ALL WATER WHEN FREEZING TEMPERATURES ARE ANTICIPATED AND BEFORE SHIPPING THE COOLING UNIT.**

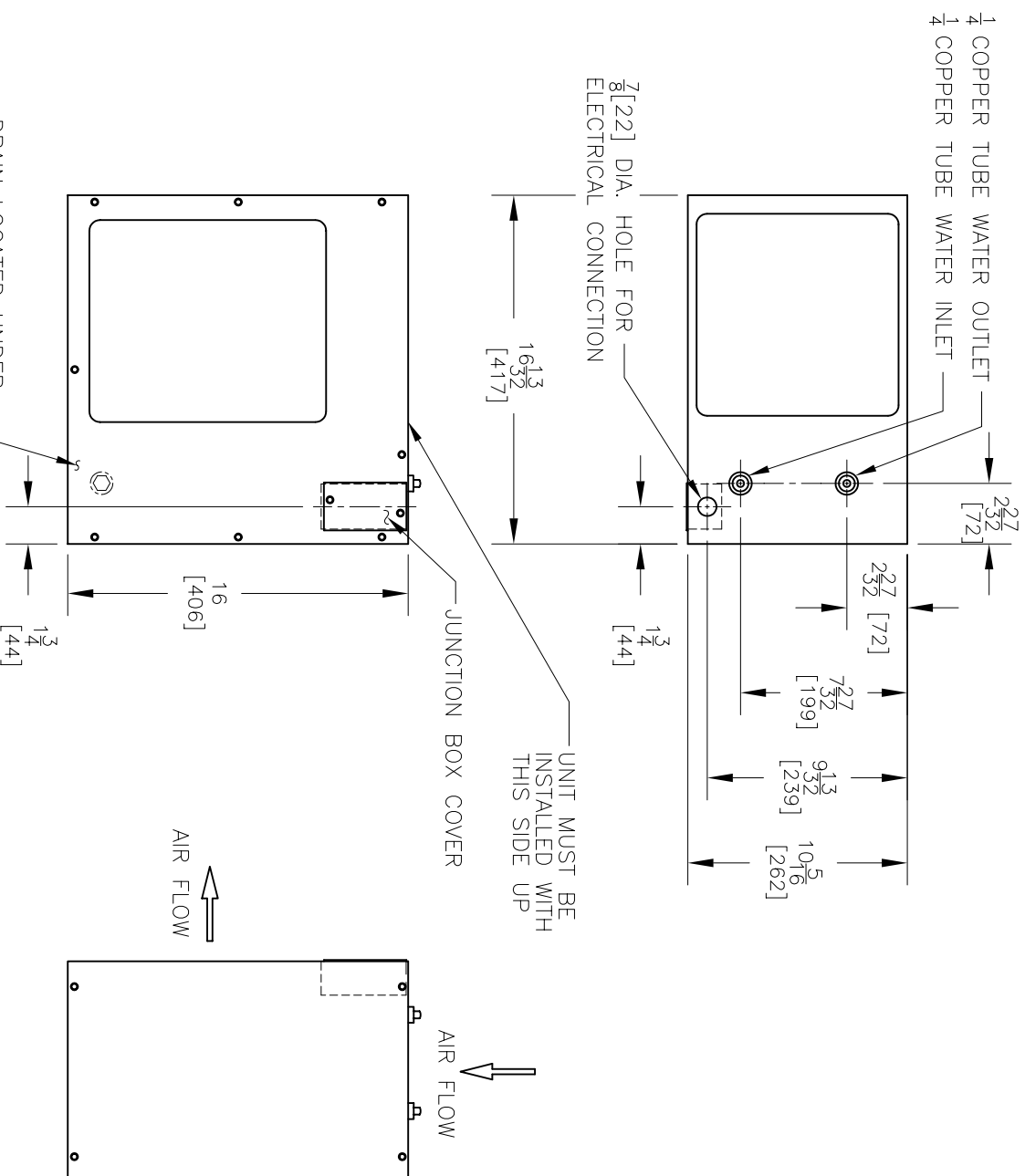
WARNING

The warranty and the Underwriters' Laboratories listing for this machine are automatically voided if this machine is altered, modified, or combined with any other machine or device. Alteration or modification of this machine may cause serious flooding and/or hazardous electrical shock or fire.

EXCEPT AS SET FORTH HEREIN, THE MANUFACTURER MAKES NO OTHER WARRANTY, GUARANTEE OR AGREEMENT EXPRESSED, IMPLIED OR STATUTORY, INCLUDING ANY IMPLIED WARRANTY OR MERCHANTABILITY OR FITNESS FOR A PARTICULAR PURPOSE.

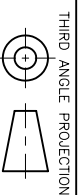
TRI PALM INTERNATIONAL, LLC
265 N. Hamilton Road • P. O. Box 13150 • Columbus, OH 43213-0150 U.S.A.
1-800-64-OASIS (1-800-646-2747)
www.OasisWaterCoolers.com

REMOTE COOLING UNITS **OASIS® R8, R12** **SUNROC RWCD8, RWCD12**



NOTES:

1. ALLOW 5 INCHES [127 MM] MIN. PER VENTILATED SIDE.
2. ALL DIMENSIONS ARE IN INCHES. DIMENSIONS IN BRACKETS [] ARE IN MILLIMETERS.
3. NOT FOR USE WITH R.O. WATER.



THIRD ANGLE PROJECTION

ROUGHING-IN
AND
DIMENSIONAL DRAWING