



OASIS INTERNATIONAL



HEAVY DUTY  
14 GAUGE STAINLESS STEEL  
DRINKING FOUNTAIN

## MSSLPM-14G (split-level)

### Suggested Specification

Wall mounted drinking fountain fabricated from 14 gauge, type 304 stainless steel polished to a #4 satin finish. Wall bracket and backpanels are included for easy installation. Contoured basin minimizes splashing and has a one piece vandal resistant bubbler keyed into position to prevent rotation. Single push button manually activated with adjustable water cartridge. Stainless steel removable drain, 1½" slip joint, cast brass union p-trap included and removable bottom panel attached with vandal resistant screws (vandal bit included). Drinking fountain complies with the requirements of ADA. when properly installed. Unit is compliant if installed in an alcove and is also compliant when mounted on an exposed wall if a wing wall is located on the left side. Drinking fountain complies with the Safe Drinking Water Act Amendments of 1986, and the Lead Contamination Control Act of 1988.

### Model

MSSLPM-14G is a non-refrigerated stainless steel drinking fountain for direct connection to a cold water supply or for use with remote water chillers.

### Standard Features

- > Built-in 100 micron strainer stops particles before they enter the waterway
- > Waterways are lead free in materials & construction
- > 14 gauge Stainless Steel construction
- > One-piece vandal resistant bubbler keyed into position
- > Single vandal resistant mechanical activation
- > Stream height adjustment
- > Brass P-Trap
- > Vandal resistant bit

### Finishes

- > Standard Cabinet Finish: Brushed Stainless Steel



### Installation

- > Prior to roughing, consult with local, state and federal codes for proper mounting height
- > Shipped with complete instructions
- > Removable bottom panel provides access for installation

### Options (at additional costs)

- > Oasis filtration system
- > Bronze Finish

**Limited 1-Year Warranty:** (Continental limits of the United States and Canada): One year from date of installation on parts only. Detailed warranty certificate enclosed with each drinking fountain; sample copy available upon request.

**Export Warranty:** One year on the sealed refrigeration system and most component parts. Detailed warranty certificate enclosed with each drinking fountain; sample copy available upon request.

Models covered by this specification complies with all known Plumbing Codes.

ADA Compliant for both adult or child when properly installed.

Components in this fountain are lead free as defined by the Safe Drinking Water Act Amendments of 1986, and the Lead Contamination Control Act of 1988.

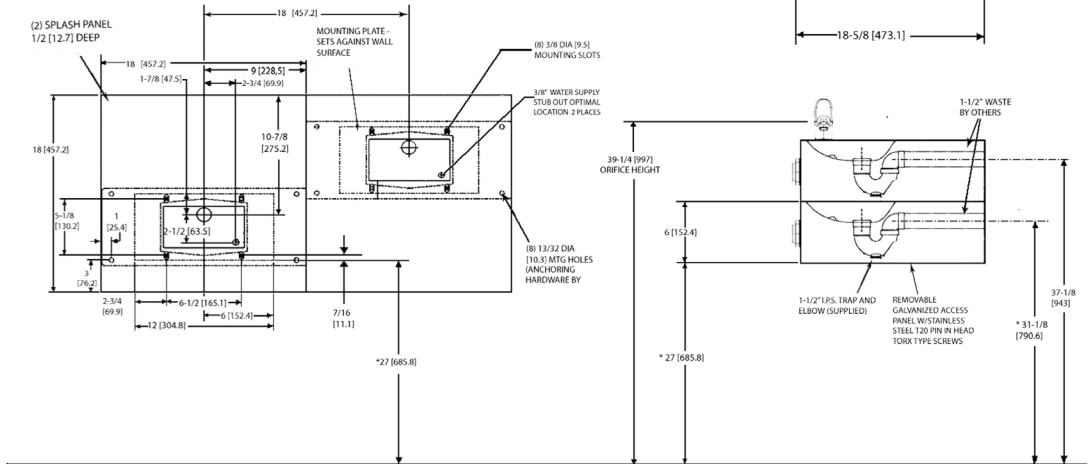


Oasis International Product  
Certified by NSF to  
NSF/ANSI Standard 61, G

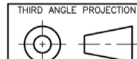
# OASIS® HEAVY DUTY 14 GAUGE, STAINLESS STEEL DRINKING FOUNTAIN MODEL MSSLPM-14G

## NOTES:

1. STOP VALVE AND ELECTRICAL OUTLET NOT INCLUDED
2. RECOMMENDED ADULT HEIGHT INSTALLATION SHOWN. ADJUST VERTICAL DIMENSIONS AS REQ'D TO COMPLY WITH FEDERAL, STATE AND LOCAL CODES.
3. ALL DIMENSIONS ARE IN INCHES. DIMENSIONS IN [ ] ARE IN MILLIMETERS.



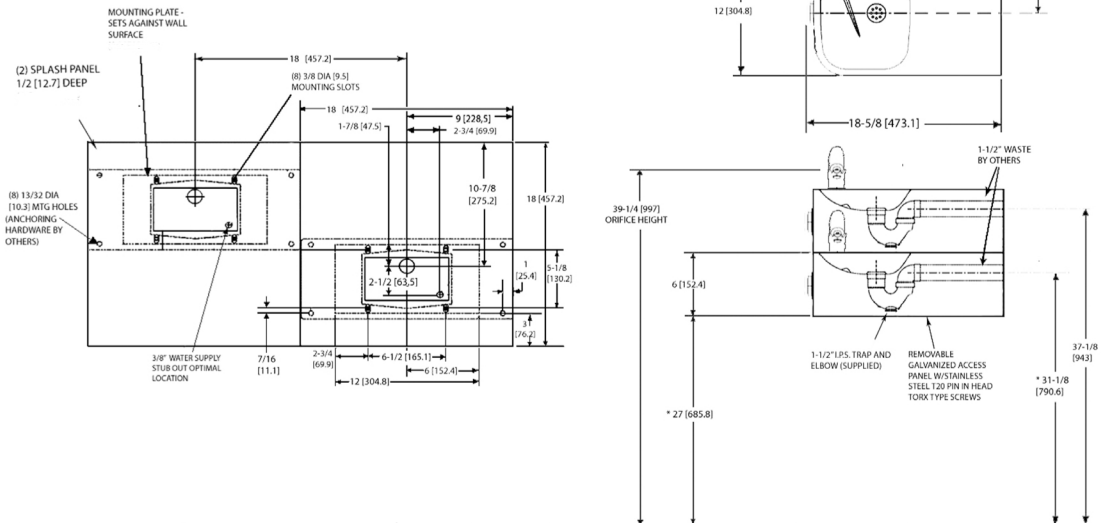
RIGHT SIDE HIGH  
CONFIGURATION



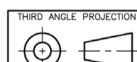
ROUGHING-IN  
AND  
DIMENSIONAL DRAWING

## NOTES:

1. STOP VALVE AND ELECTRICAL OUTLET NOT INCLUDED
2. RECOMMENDED ADULT HEIGHT INSTALLATION SHOWN. ADJUST VERTICAL DIMENSIONS AS REQ'D TO COMPLY WITH FEDERAL, STATE AND LOCAL CODES.
3. ALL DIMENSIONS ARE IN INCHES. DIMENSIONS IN [ ] ARE IN M



RIGHT SIDE LOW  
CONFIGURATION



ROUGHING-IN  
AND  
DIMENSIONAL DRAWING

