

## Retrofit Cold Tank Drain for KaliX Coolers

---

A fault has been identified in a batch of tubing used to fabricate the drain assembly for a number of KaliX water coolers. This tubing has been found to contain a flaw that could cause it to rupture in use.

OASIS have now developed a retrofit kit that can be used to quickly replace the entire drain assembly.

### Identifying coolers at risk:

- Coolers with serial numbers in the range 0740Pxxxxx to 0802Pxxxxx – no other coolers are affected
- If the serial number is in the above range then examine the drain tube:
  - Solid white tube: OK
  - Translucent silicone tube: Needs replacement

The retrofit kit consists of the following 4 parts already assembled together.




- 034782-001      x 0.4 metres DRAIN TUBE
- 034361-001      x 1            DRAIN VALVE
- 034783-001      x 1            HOSE CLAMP
- 034513-002      x 1            BRACKET, DRAIN VALVE

And also

- 026642-023      x 2            SCREW
- 034783-001      x 2            HOSE CLAMP.

For Fitting Instructions please follow the instructions & illustrations on the following pages.

### Retrofit Cold Tank Drain for KaliX Coolers

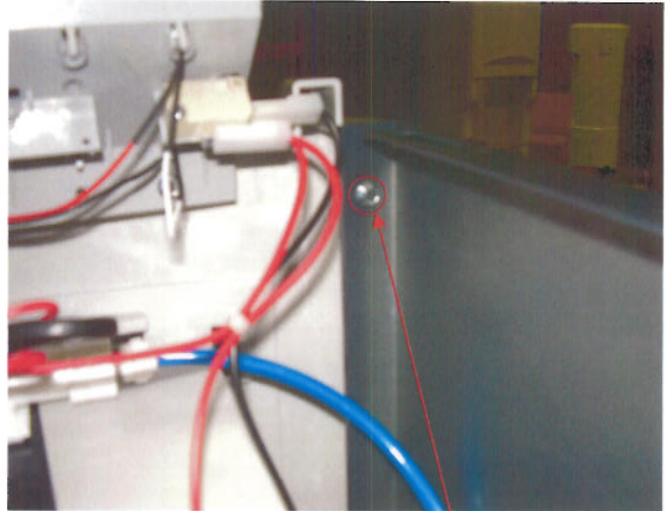
<u>IMPORTANT.</u> Before working on the Cooler it must be Disconnected from the Electricity & Water Supply.	<u>Safety.</u> Wear Gloves.Sharp edges.	<u>Tools</u> ¼" or 6.25mm Ratchet & Socket. Screwdriver. Knife.
 <p>1) Remove 2 Lid Screws</p>	 <p>2) Place Lid assembly aside. Take care not to dismantle cup dispenser.</p>	
 <p>3) Remove Drip Tray</p>	 <p>4) Remove front Door.</p>	

### Retrofit Cold Tank Drain for KaliX Coolers

---



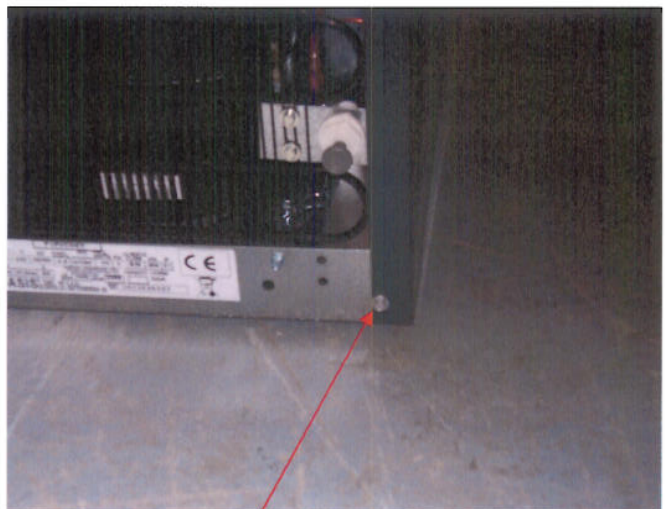
5) Remove RH side panel as follows.



6) Remove Top Inside Side panel Screw.



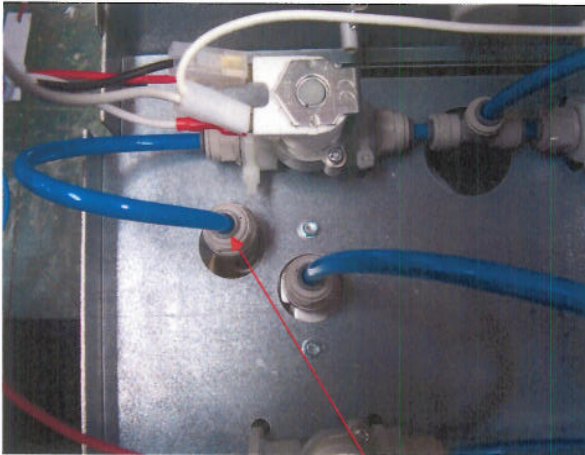
7) Remove Shelf Side Panel Screw.



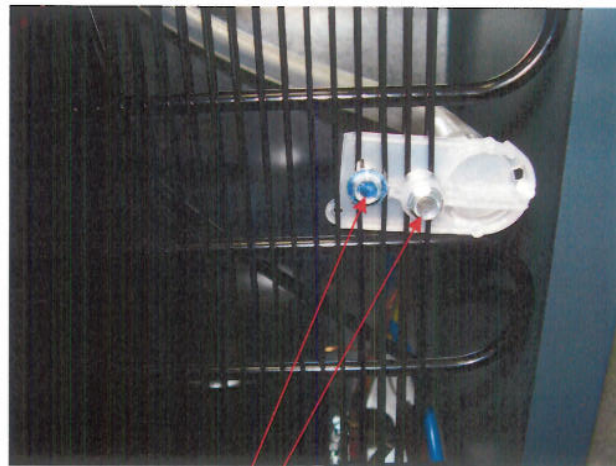
8) Remove Base Screw & lift off Side Panel.  
**Note:** Panel lifts upwards for approx 25mm before becoming free of guides.

### Retrofit Cold Tank Drain for KaliX Coolers

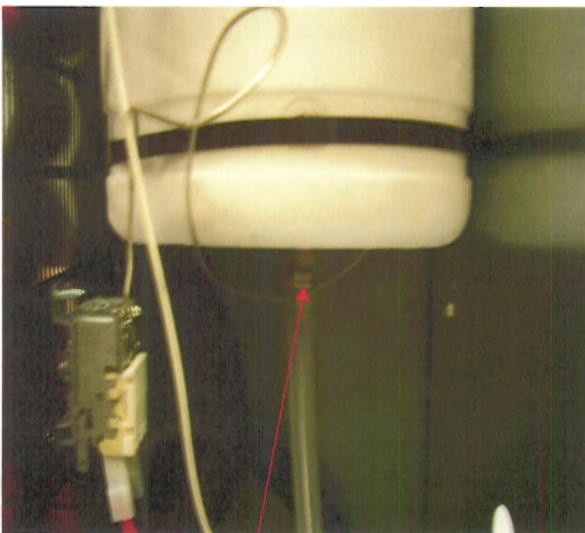
---



9) **To drain the water** remove the inlet tube from tank & open tank drain valve at rear of unit. Ensure you place a container under the valve prior to opening it. Remember to re-connect inlet tube when drained.

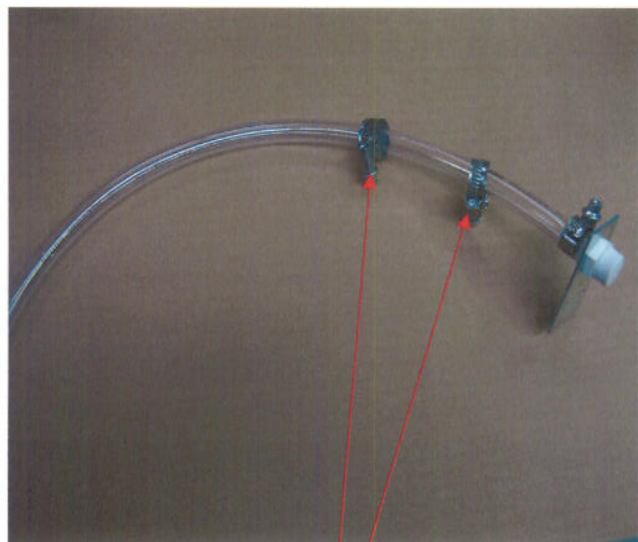


10) Remove 2 screws from Condenser & slide out Drain Valve.



11) Remove Hose Clip from Tube at bottom of Tank. Pull off Drain Tube & and discard. **Note:** The tube is easier to remove if it is cut slightly along the stainless pipe using a sharp knife.

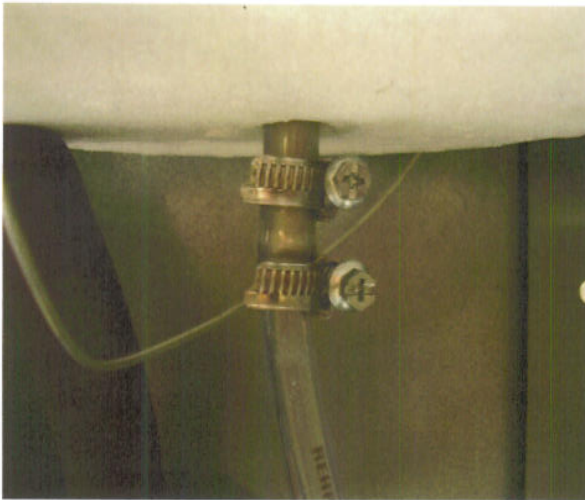
**Caution :** Sharp edges.



12) Loosely slide 2 Hose Clips over **New** Tank Drain Assy.

### Retrofit Cold Tank Drain for KaliX Coolers

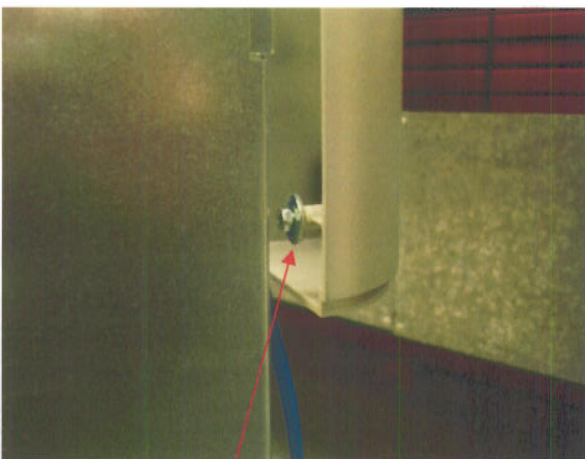
---



13) Push the Drain assy onto the Tank until it touches the insulation. Tighten the 2 Hose Clips having one **above** & one **below** the bump on the Stainless Steel pipe.



14) Fit the Drain Bracket to the condenser & secure with 2 screws.



15) Replace the Side Panel by sliding slotted key hole over the screw shown (inside front panel) & guide the bottom slot into the moulded Base. Now secure using 3 screws as before.

16) Refit the Top & secure in position using 2 screws.  
Refit the front Door & Drip Tray.

As the water circuit has been interfered with it is recommended that the cooler is fully tested before installation to the end user.